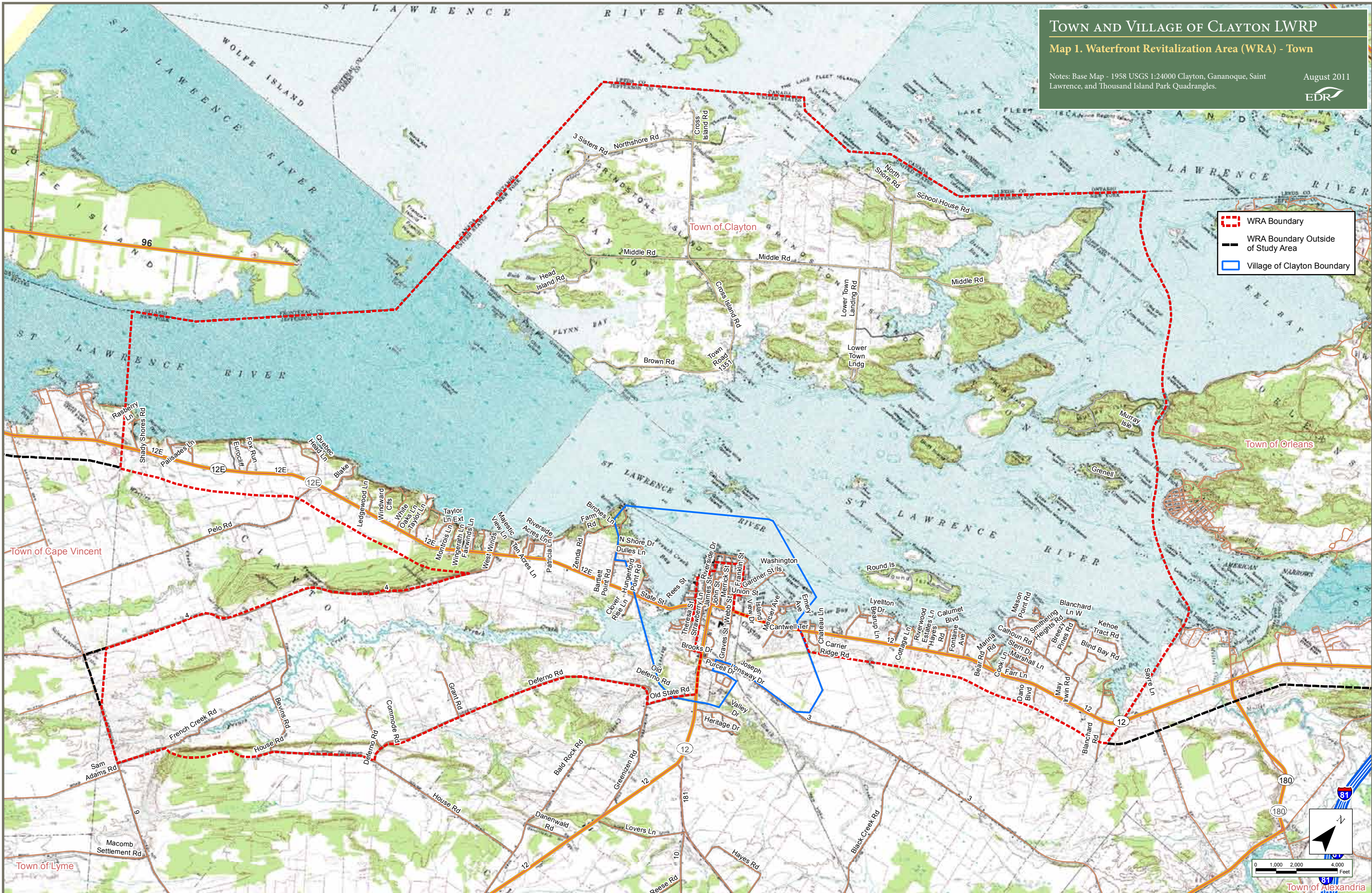


TOWN AND VILLAGE OF CLAYTON LWRP

Map 1. Waterfront Revitalization Area (WRA) - Town

Notes: Base Map - 1958 USGS 1:24000 Clayton, Gananoque, Saint Lawrence, and Thousand Island Park Quadrangles.

August 2011



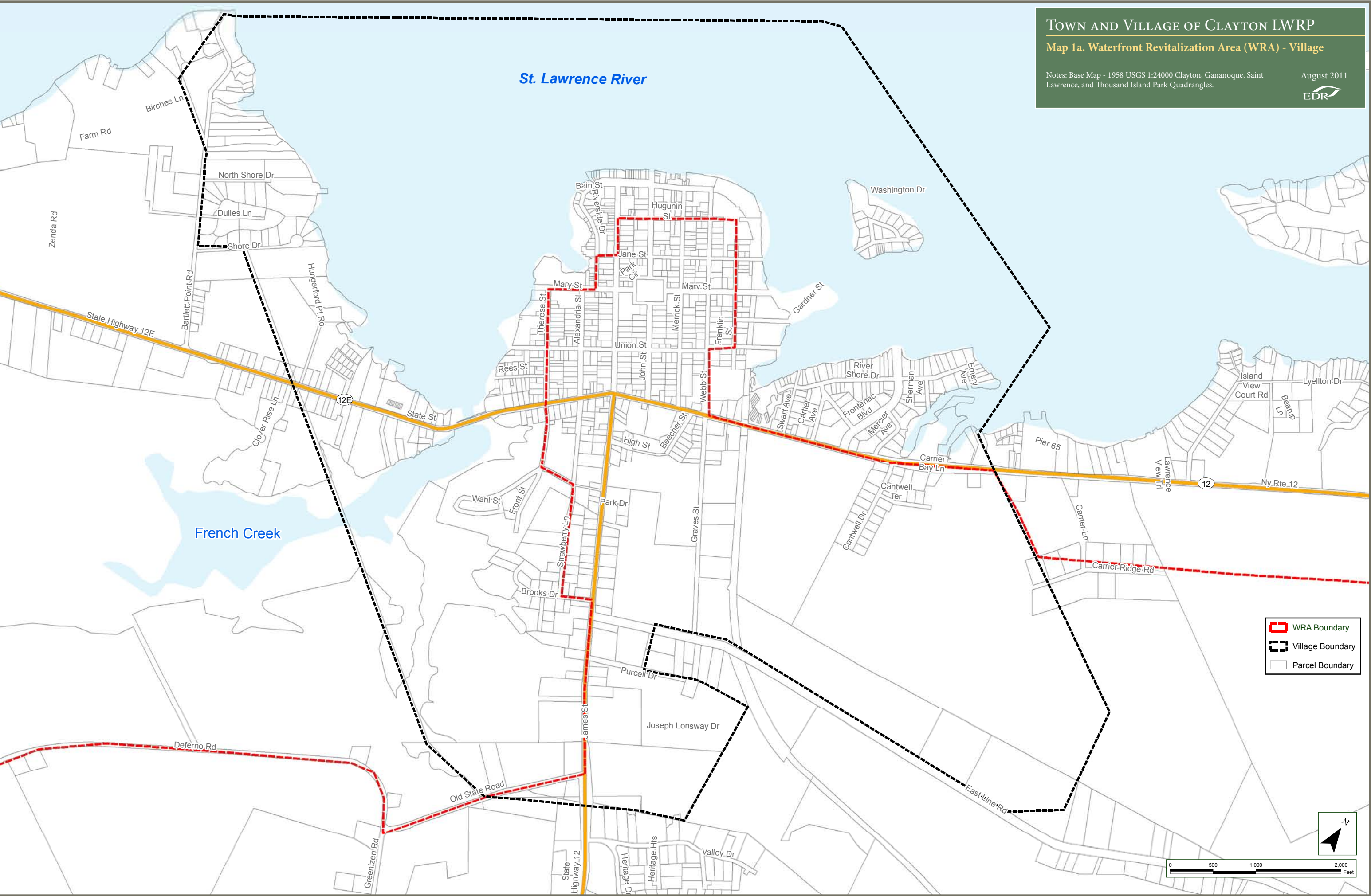
This map was prepared for the New York State Department of State with funds provided under Title 11 of the Environmental Protection Fund.

TOWN AND VILLAGE OF CLAYTON LWRP

Map 1a. Waterfront Revitalization Area (WRA) - Village

Notes: Base Map - 1958 USGS 1:24000 Clayton, Gananoque, Saint Lawrence, and Thousand Island Park Quadrangles.

August 2011



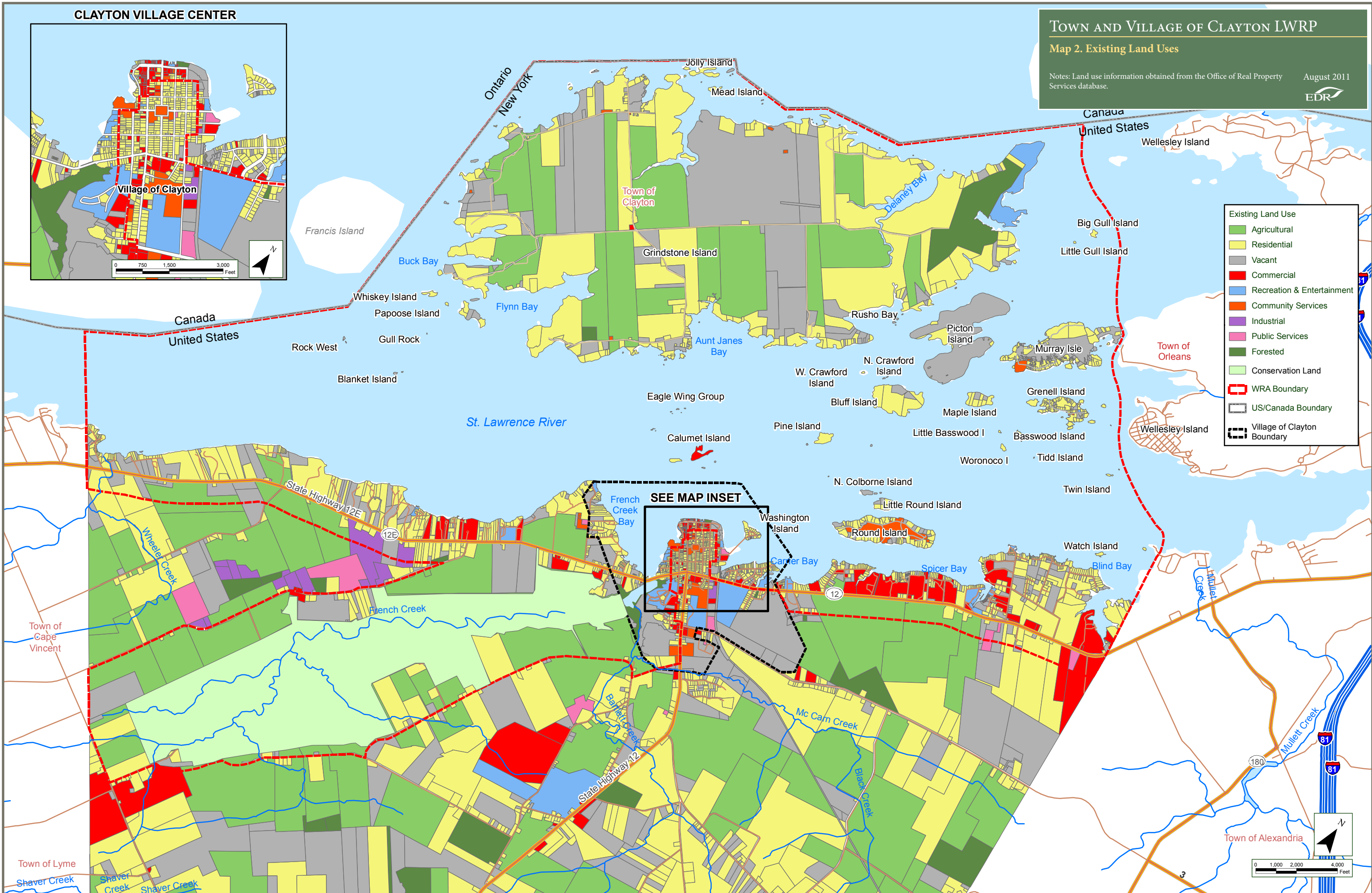
This map was prepared for the New York State Department of State with funds provided under Title 11 of the Environmental Protection Fund.

CLAYTON VILLAGE CENTER

TOWN AND VILLAGE OF CLAYTON LWRP

Map 2. Existing Land Uses

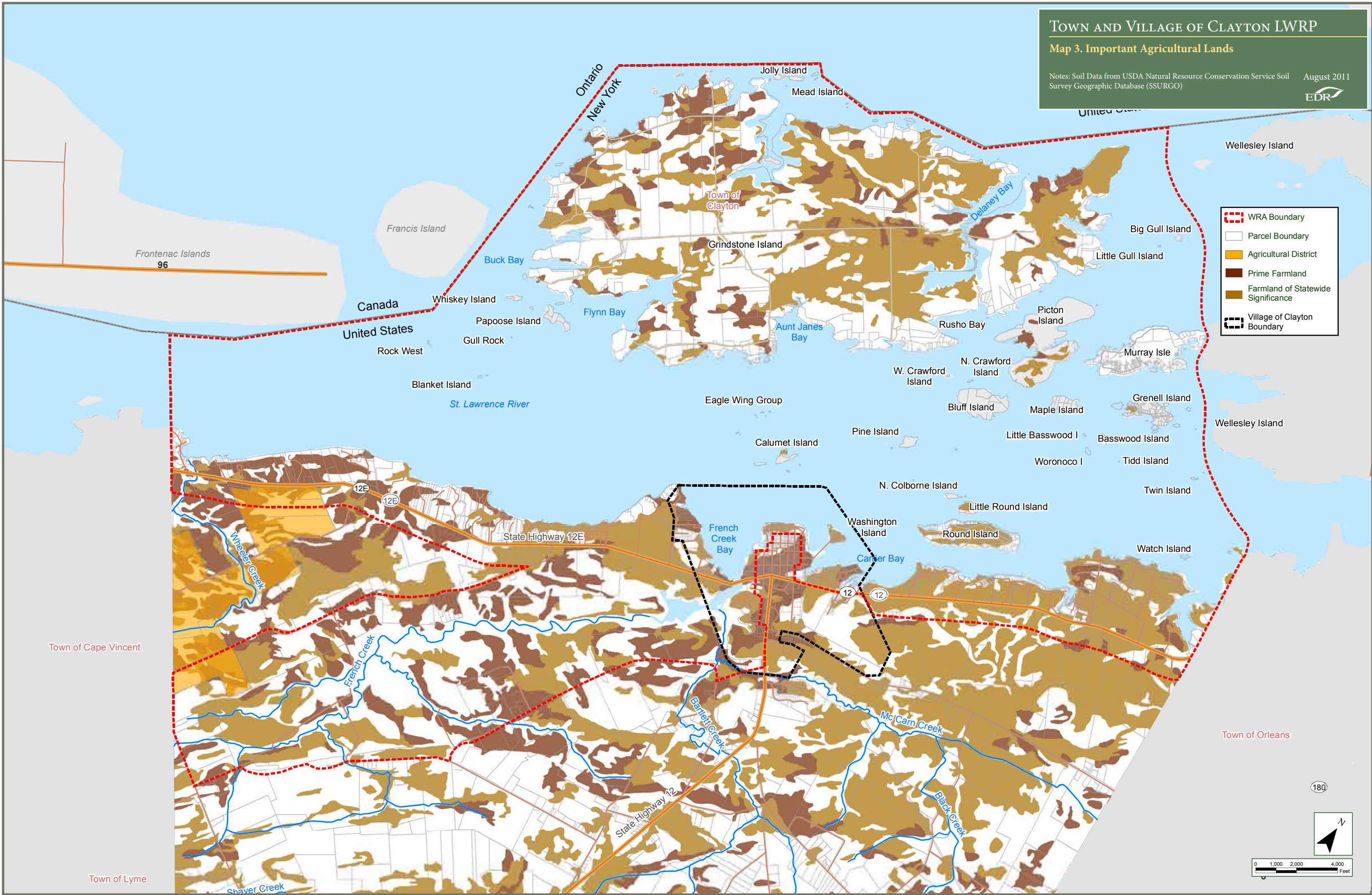
Notes: Land use information obtained from the Office of Real Property Services database. August 2011



TOWN AND VILLAGE OF CLAYTON LWRP

Map 3. Important Agricultural Lands

Notes: Soil Data from USDA Natural Resource Conservation Service Soil Survey Geographic Database (SSURGO) August 2011



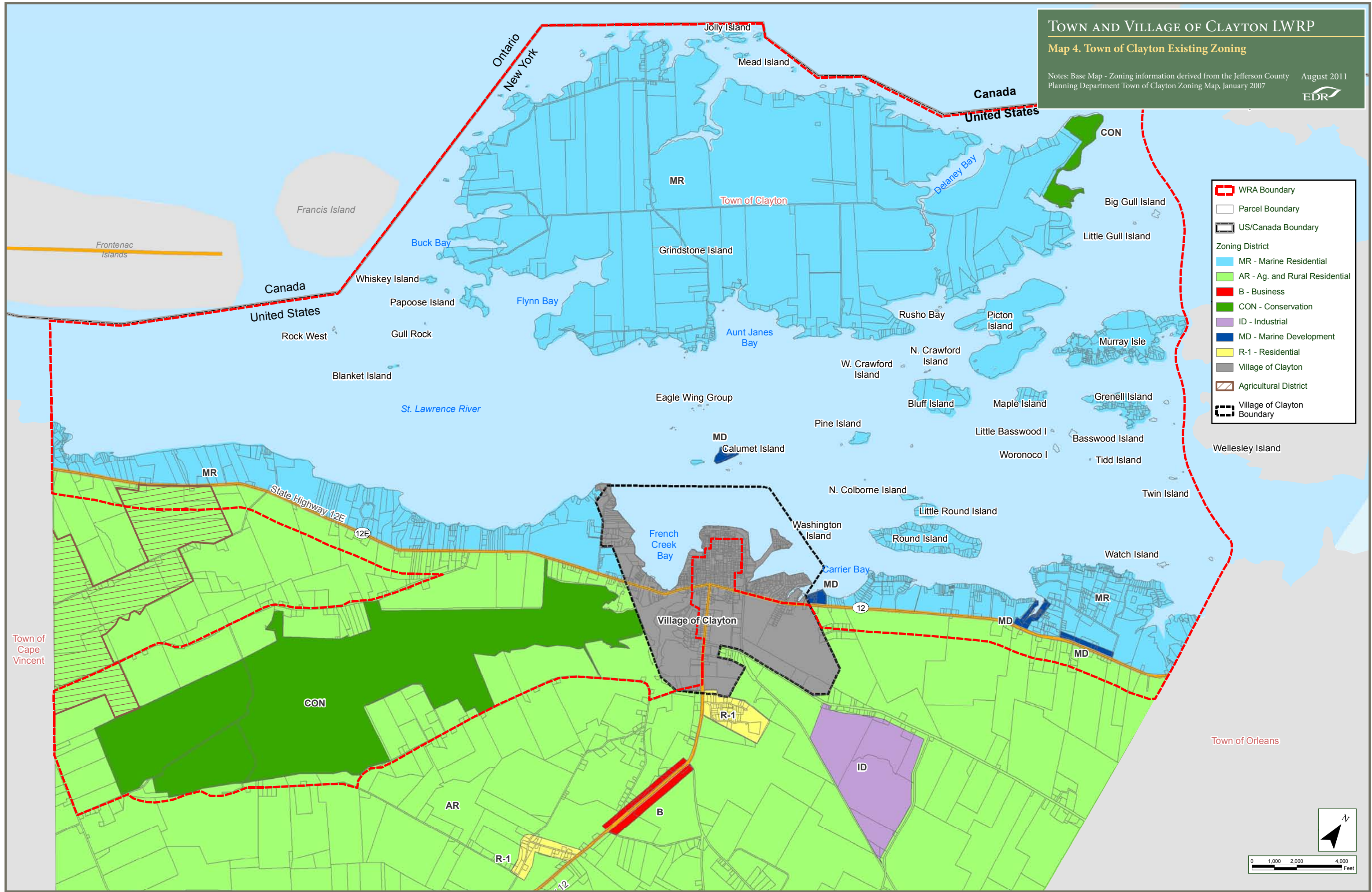
This map was prepared for the New York State Department of State with funds provided under Title 11 of the Environmental Protection Fund.

TOWN AND VILLAGE OF CLAYTON LWRP

Map 4. Town of Clayton Existing Zoning

Notes: Base Map - Zoning information derived from the Jefferson County Planning Department Town of Clayton Zoning Map, January 2007

August 2011

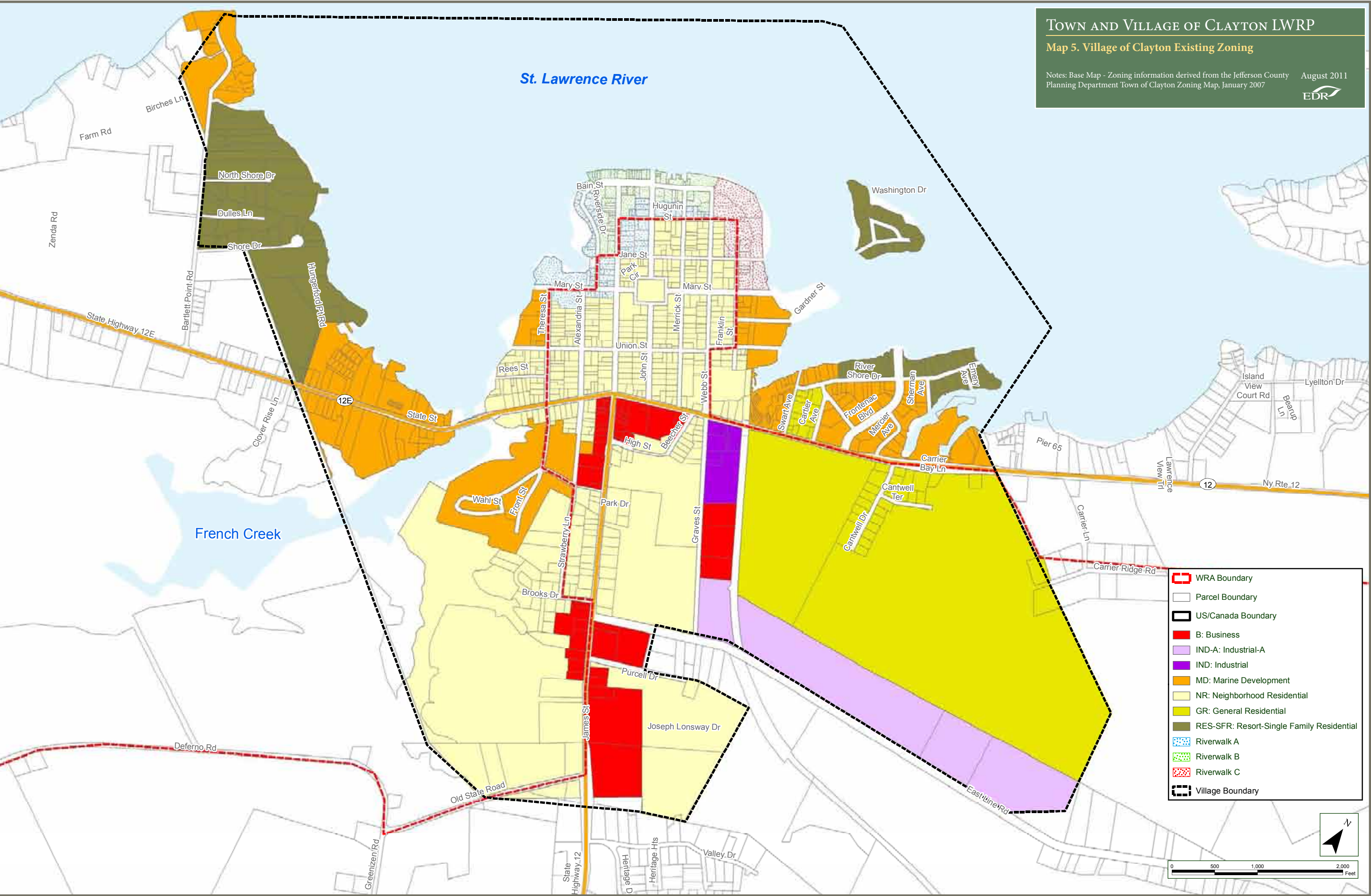


TOWN AND VILLAGE OF CLAYTON LWRP

Map 5. Village of Clayton Existing Zoning

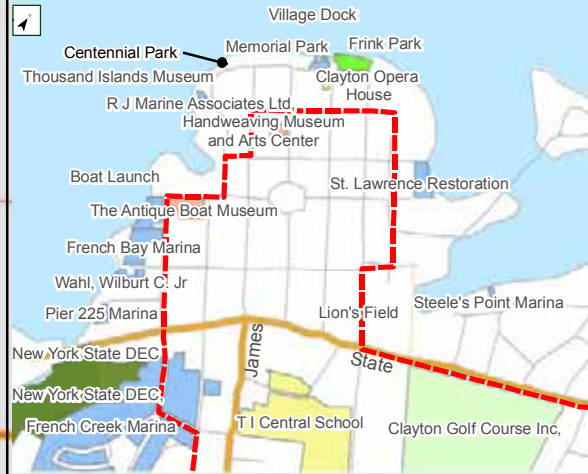
Notes: Base Map - Zoning information derived from the Jefferson County Planning Department Town of Clayton Zoning Map, January 2007

August 2011



CLAYTON VILLAGE CENTER

0 750 1,500 3,000 Feet



TOWN AND VILLAGE OF CLAYTON LWRP

Map 6. Public Access and Recreation

August 2011

